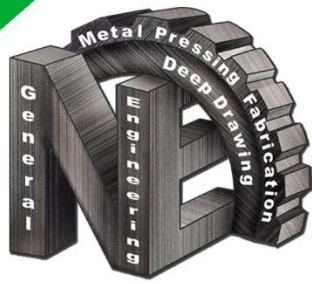


NEMA

Engineering
Est. 1958

Product Catalogue



NEMA

Engineering
Est. 1958

Who we Are

Tool and die making, metal pressing and general engineering.

Established in 1958 and situated in New Doornfontein, Johannesburg, Gauteng, Nema Engineering stems from a long business history for over 50 years (A total of 123 years of working experience). Our experience and capabilities lie within the tool & die, metal pressings and general engineering industry.

Our focus areas are mainly within the Mining, Engineering, Hardware and Tooling industry with a vision to branch off more extensively into the General Fabrication industry. As a result we have gained a reputable track record and an extensive and well known customer base which we aim to continue servicing and growing.

We offer the following services:

Die Designs, prototyping through to product realization

- Conventional Milling and Turning
- Guillotine cutting up to 6mm
- Punching and Pressing of assorted steel products
- Sheet metal bending

We offer the following products: Metal pressings for the various sectors using press tools designed and manufactured by Nema Engineering

We service the following industries:

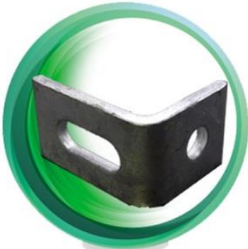
- Electrical
- Lighting OEM's
- Automotive OEM's aftermarket
- Cable Support Systems
- Domestic Hardware (Building Hardware)



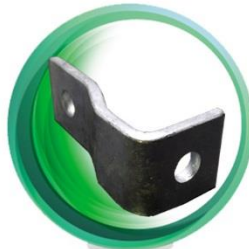
NEMA

Engineering
Est. 1958

Cable Support



F1749



F2400



F1031



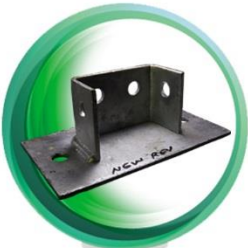
F1271



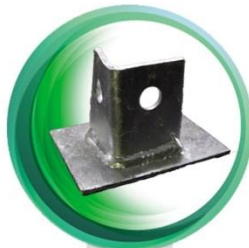
F1272



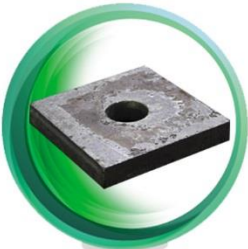
F1737



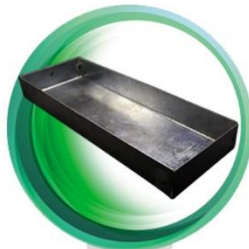
F2073/A



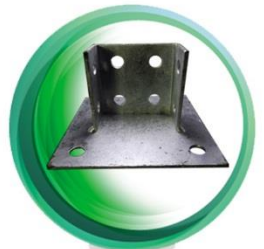
F1026



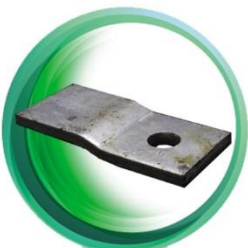
Flat Washers
F1061, F1062, F1063, F1064



F801
End Cap



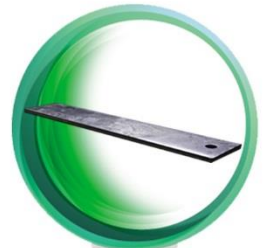
F2073/89



F-Z01



F1066



FB30/6

Physical Address:
12/14 Miller street, Corner 7th Street
New Doornfontein, Johannesburg
South Africa

Postal Address:
P O Box 34247, Jeppestown
Johannesburg, South Africa
2043

Tel. No: +27 (0) 11 402 6066/7
Fax to Email: +27 (0) 86 730 0034/3
Email: sales@nemaeng.co.za



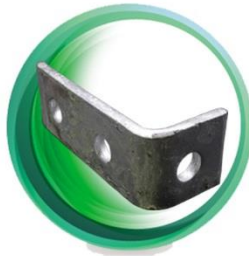
NEMA

Engineering
Est. 1958

Cable Support



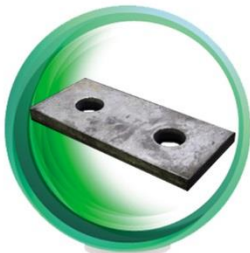
J-Type Rung



F1326



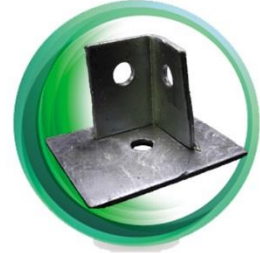
Purlin Hanger



F1065



Jockey Clamp



F2072/31



F1546



Trefoil 42



F2785/86



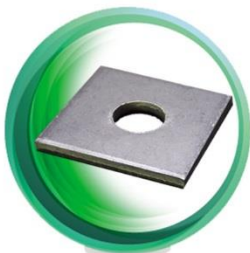
F1796



F2484



F1747



Flat Washer



Physical Address:
12/14 Miller street, Corner 7th Street
New Doornfontein, Johannesburg
South Africa

Postal Address:
P O Box 34247, Jeppestown
Johannesburg, South Africa
2043

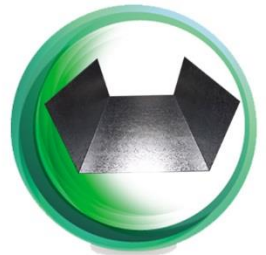
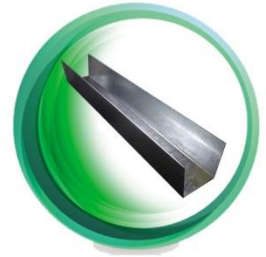
Tel. No: +27 (0) 11 402 6066/7
Fax to Email: +27 (0) 86 730 0034/3
Email: sales@nemaeng.co.za



NEMA

Engineering
Est. 1958

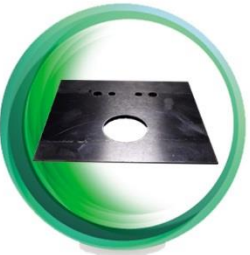
Cable Support



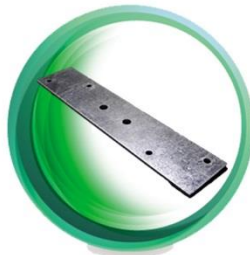
F1186

F9000

Lighting



Heat Shield Back



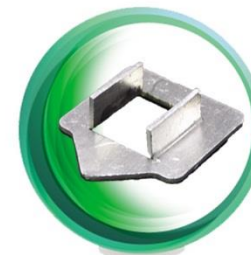
B10026
Gandin Plate



Titan Wall Mount
56068



Lighting spigot



Degree Indicator



Outreach spigot



Wooden Pole
Spigot Bracket



Stainless steel
Universal Corners

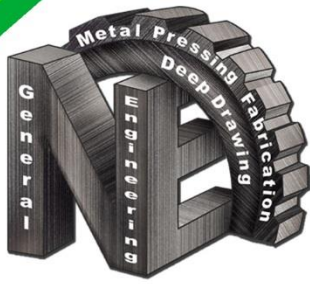


Hiwge assembly

Physical Address:
12/14 Miller street, Corner 7th Street
New Doornfontein, Johannesburg
South Africa

Postal Address:
P O Box 34247, Jeppestown
Johannesburg, South Africa
2043

Tel. No: +27 (0) 11 402 6066/7
Fax to Email: +27 (0) 86 730 0034/3
Email: sales@nemaeng.co.za



NEMA

Engineering
Est. 1958

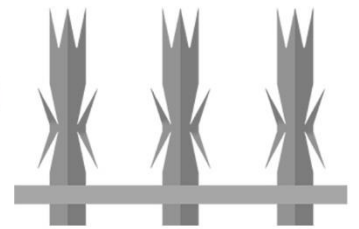
Wall spikes 1450mm long

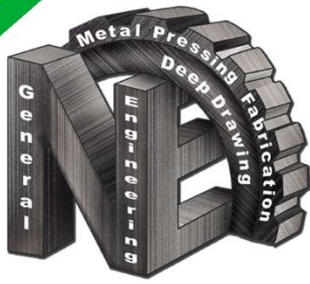
Black Mild Steel or Electroplated silver or Gold



Palisades range from: 300mm to 3m length

We offer 5 spike and 7 spike. – Black Mild steel
(Other Surface finishing options available)

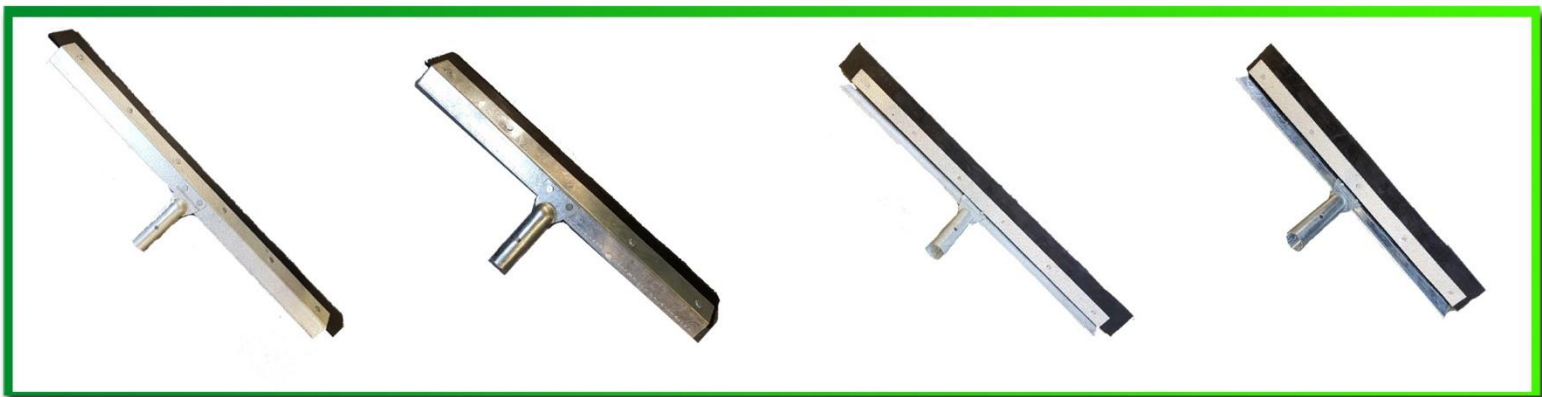




NEMA

Engineering
Est. 1958

Rubber Squeegee heads 18 & 24 inch (450mm or 610mm)
Head – galvanized handle or wooden Handles



Rakes – Black Mild steel or alternate surface finishings





NEMA

Engineering
Est. 1958

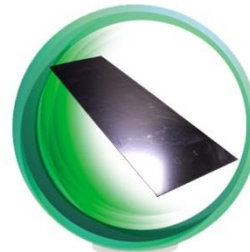
Lighting



Outreach light pole bracket



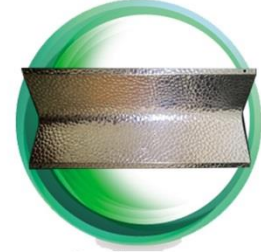
Reflector



Shiny Side Reflector



Stirrup Bracket



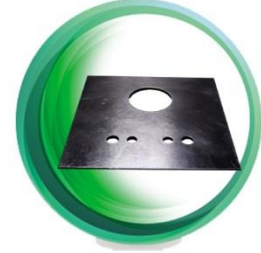
Reflector



Lamp Holder



Vulcan Bracket



Heat Shield Front



*Glass Clip
52008*

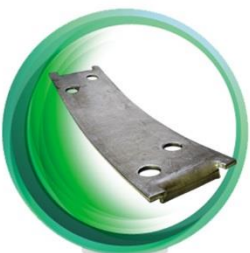


Bracket Outreach



*Gardini Plate
B1015*

Mining



Brakes

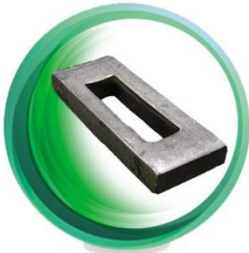


Plate Fillet

Physical Address:
12/14 Miller street, Corner 7th Street
New Doornfontein, Johannesburg
South Africa

Postal Address:
P O Box 34247, Jeppestown
Johannesburg, South Africa
2043

Tel. No: +27 (0) 11 402 6066/7
Fax to Email: +27 (0) 86 730 0034/3
Email: sales@nemaeng.co.za



NEMA

Engineering
Est. 1958

Automotive - Sub Components



*Bracket
0198*



*Bracket
0058161*



*Bracket
0197*



*Clevis
0059-9*



*Bracket
0119*



*Bracket
083*



B15



*0197
Bracket*



B128



B130



B078

Physical Address:
12/14 Miller street, Corner 7th Street
New Doornfontein, Johannesburg
South Africa

Postal Address:
P O Box 34247, Jeppestown
Johannesburg, South Africa
2043

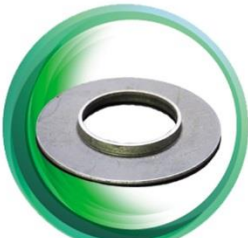
Tel. No: +27 (0) 11 402 6066/7
Fax to Email: +27 (0) 86 730 0034/3
Email: sales@nemaeng.co.za



NEMA

Engineering
Est. 1958

General Engineering



Z206



*Bottom Galv cover
7161921*



Star Washer



Triangular Washer



Ring Cover



*Bottle Opener
B04*



Corner Capping



Tamper Cup



Back Plate



Coach Handles Railway



Kettle Plug



Fork



Grippa Dome



*B.09
Bottle Opener*



J Bracket

Physical Address:
12/14 Miller street, Corner 7th Street
New Doornfontein, Johannesburg
South Africa

Postal Address:
P O Box 34247, Jeppestown
Johannesburg, South Africa
2043

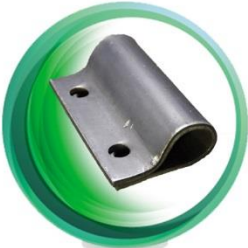
Tel. No: +27 (0) 11 402 6066/7
Fax to Email: +27 (0) 86 730 0034/3
Email: sales@nemaeng.co.za



NEMA

Engineering
Est. 1958

General Engineering



Centre Clip



Scraper Plate



Grippa Dome



Dome



L Bracket



King Clip



Self Locating DRP



Corner Bracket



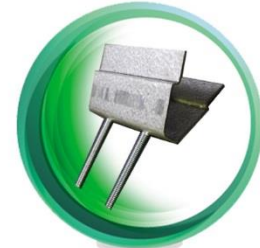
Notch 80mm



Filter Cap



Hex Clip



Macsteel Clip



Physical Address:
12/14 Miller street, Corner 7th Street
New Doornfontein, Johannesburg
South Africa

Postal Address:
P O Box 34247, Jeppestown
Johannesburg , South Africa
2043

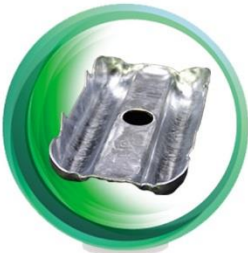
Tel. No: +27 (0) 11 402 6066/7
Fax to Email: +27 (0) 86 730 0034/3
Email: sales@nemaeng.co.za



NEMA

Engineering
Est. 1958

Hardware



Saddles



Spoon



Dome Cup



Squeegee 18"



Squeegee

Electrical



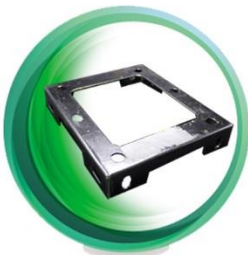
Angle Bracket



Terminal Holder



Frame Bracket



S.A 149

Physical Address:
12/14 Miller street, Corner 7th Street
New Doornfontein, Johannesburg
South Africa

Postal Address:
P O Box 34247, Jeppestown
Johannesburg , South Africa
2043

Tel. No: +27 (0) 11 402 6066/7
Fax to Email: +27 (0) 86 730 0034/3
Email: sales@nemaeng.co.za